



# Marshfield Medical Center–Park Falls

Marshfield Clinic Health System serves Price County area communities through two medical offices, a hospital and a home health and hospice location. Marshfield Medical Center–Park Falls includes an 11-bed hospital. The medical center provides 24/7 emergency department coverage along with adult and pediatric primary care, critical care transport, imaging and lab services, physical and occupational therapy and surgical services.

The Health System’s network of care in the region includes an additional primary care location in Phillips.

## Structure and Leadership

Marshfield Medical Center–Park Falls is overseen by a six-person Community Advisory Board.

**Ty Erickson**

*President*

**Tony Blair, M.D.**

*VP of Medical Affairs*

**Patti Kerkorian, R.N.**

*Chief Nursing Officer*

## Facts and Figures\*

- Employs approximately 200 people
- Critical Access Hospital serving patients in 60-mile radius
- Access to over 13 specialties
- Cares for over 4,500 people in the emergency department every year
- Performs about 60 surgeries per month
- Level IV Trauma Center

\*Data from 2022

## Contact

98 Sherry Avenue, Park Falls, WI 54552

715-762-2484





[facebook.com/MCHSPF](https://facebook.com/MCHSPF)

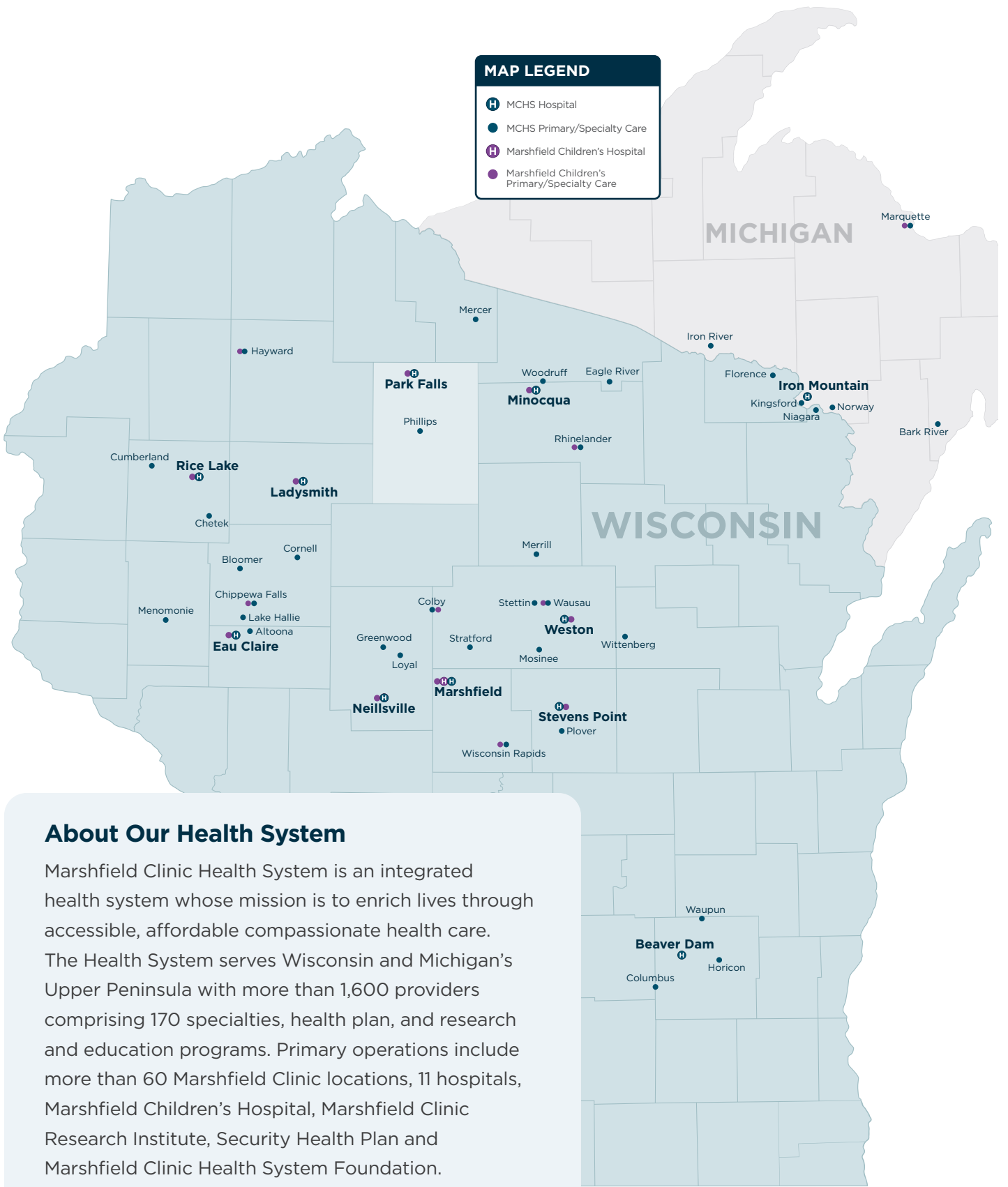
[marshfieldclinic.org/regional/parkfalls](https://marshfieldclinic.org/regional/parkfalls)



Marshfield Medical Center–Park Falls

**MAP LEGEND**

-  MCHS Hospital
-  MCHS Primary/Specialty Care
-  Marshfield Children's Hospital
-  Marshfield Children's Primary/Specialty Care



## About Our Health System

Marshfield Clinic Health System is an integrated health system whose mission is to enrich lives through accessible, affordable compassionate health care. The Health System serves Wisconsin and Michigan's Upper Peninsula with more than 1,600 providers comprising 170 specialties, health plan, and research and education programs. Primary operations include more than 60 Marshfield Clinic locations, 11 hospitals, Marshfield Children's Hospital, Marshfield Clinic Research Institute, Security Health Plan and Marshfield Clinic Health System Foundation.



**Marshfield Clinic  
Health System**



**marshfield  
children's®**