



Marshfield Medical Center–Neillsville

Marshfield Clinic Health System serves the Neillsville area through several primary and specialty care locations. Marshfield Medical Center–Neillsville includes a 12-bed hospital located in west-central Wisconsin. The medical center provides 24/7 emergency department coverage along with adult and pediatric primary care, critical care transport, imaging and lab services, pharmacy, inpatient and outpatient physical therapy, speech therapy, occupational therapy, cardiac rehabilitation, a full scope of general and orthopedic surgery services, swing bed program and sleep medicine.

The Health System’s network of care in the region includes clinic locations in Neillsville, Greenwood, Loyal, Colby and Stratford.

Structure and Leadership

Marshfield Medical Center-Neillsville is overseen by a seven-person Community Advisory Board.

Robert Chaloner

President

Sally Zillman

VP of Operations

Sumithra Tirunagaram, M.D.

Interim VP of Medical Affairs

Timothy Golemgieski, M.D.

Assistant VP of Medical Affairs

Victoria Varsho

Chief Nursing Officer

Facts and Figures*

- Access to 13 specialties on site
- 29 clinic exam rooms
- Special rooms for telehealth consults
- Community-funded Infusion and Outpatient Center
- Level IV Trauma Center – Critical Access Hospital
- Cared for 7,100 patients in the emergency department and urgent care

*Data from 2022

Contact

N3708 River Ave., Neillsville, WI 54456

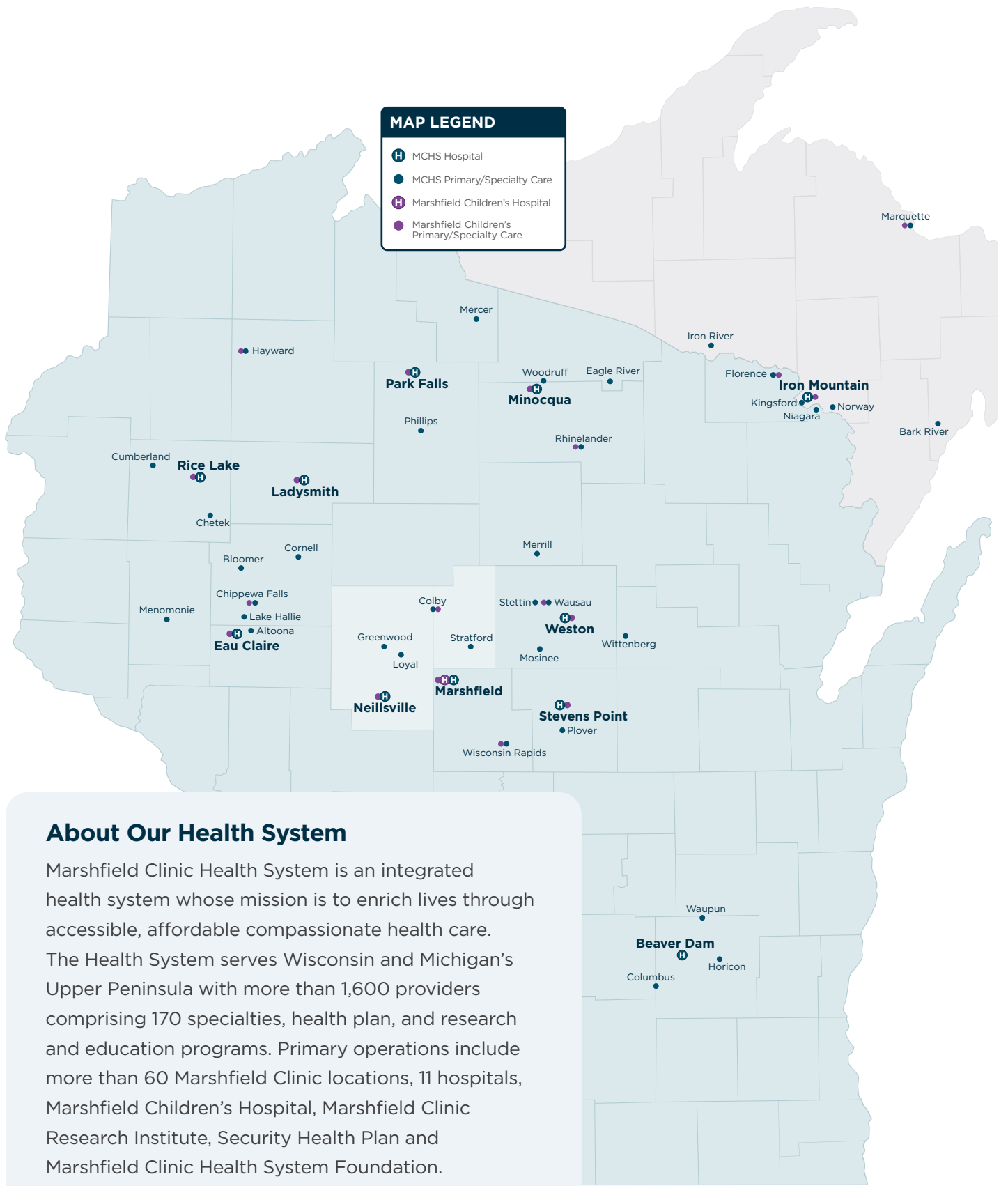
715-743-3101

facebook.com/MCHSNVL

marshfieldclinic.org/regional/neillsville



Marshfield Medical Center–Neillsville



About Our Health System

Marshfield Clinic Health System is an integrated health system whose mission is to enrich lives through accessible, affordable compassionate health care. The Health System serves Wisconsin and Michigan's Upper Peninsula with more than 1,600 providers comprising 170 specialties, health plan, and research and education programs. Primary operations include more than 60 Marshfield Clinic locations, 11 hospitals, Marshfield Children's Hospital, Marshfield Clinic Research Institute, Security Health Plan and Marshfield Clinic Health System Foundation.



**Marshfield Clinic
Health System**



**marshfield
children's®**