



Marshfield Medical Center–Weston

Marshfield Clinic Health System serves the greater Wausau and Weston area through six locations in central Wisconsin. Marshfield Medical Center–Weston includes a 60-bed hospital. It provides 24/7 emergency department coverage along with adult and pediatric primary care, birthing services, critical care transport, imaging and lab services, pharmacy, physical therapy, sleep medicine and surgical services.

The Health System’s network of care in the region includes clinic locations in Merrill, Mosinee, Stettin, Wausau, Weston and Wittenberg.

Structure and Leadership

Marshfield Medical Center–Weston is overseen by a 10-person Community Advisory Board.

Chris Soska
President

James Raczek, M.D.
VP of Medical Affairs

Jo Ann Weinfurter, M.S.N., R.N.
Chief Nursing Officer

Facts and Figures*

- Employs nearly 1,700 people
- Access to over 50 specialties
- Cared for over 14,000 patients in the emergency department
- Performed over 3,000 surgeries
- Delivered 419 babies
- Level III Trauma Center

*Data from 2022

Contact

3400 Ministry Pkwy, Weston WI 54476

715-393-3000





facebook.com/MCHSWES

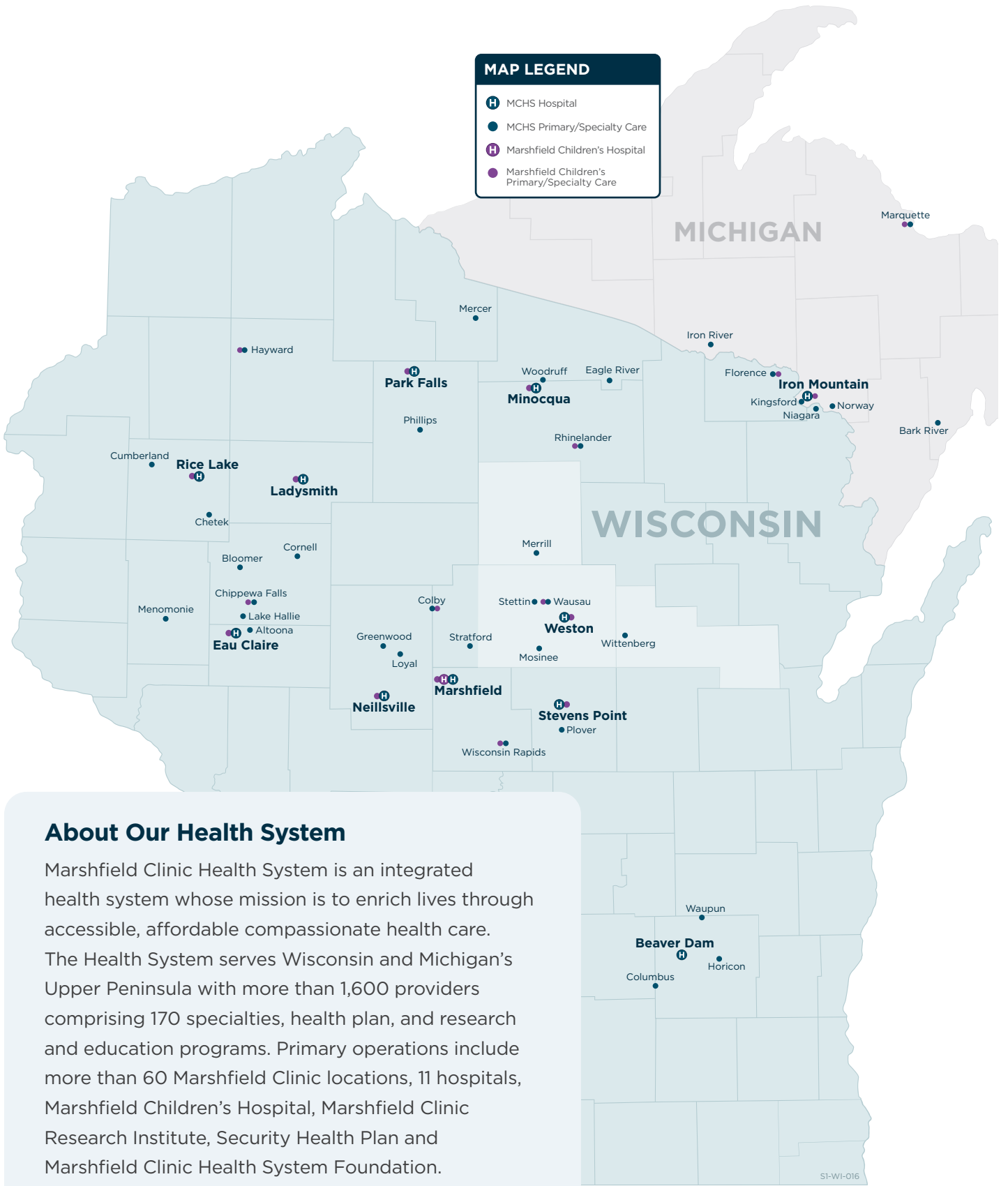
marshfieldclinic.org/regional/weston



Marshfield Medical Center–Weston

MAP LEGEND

-  MCHS Hospital
-  MCHS Primary/Specialty Care
-  Marshfield Children's Hospital
-  Marshfield Children's Primary/Specialty Care



About Our Health System

Marshfield Clinic Health System is an integrated health system whose mission is to enrich lives through accessible, affordable compassionate health care. The Health System serves Wisconsin and Michigan's Upper Peninsula with more than 1,600 providers comprising 170 specialties, health plan, and research and education programs. Primary operations include more than 60 Marshfield Clinic locations, 11 hospitals, Marshfield Children's Hospital, Marshfield Clinic Research Institute, Security Health Plan and Marshfield Clinic Health System Foundation.



Marshfield Clinic Health System



marshfield children's