



# Marshfield Medical Center–River Region Stevens Point Campus

Marshfield Clinic Health System serves the Stevens Point area through one medical center, a cancer center and two primary and specialty care locations. Marshfield Medical Center–River Region at Stevens Point includes a 12-bed hospital. The medical center provides 24/7 emergency department coverage along with adult and pediatric primary care, urgent care, emergency transportation, palliative care, an inpatient unit, imaging and lab services, pharmacy, physical and occupational therapy and surgical services.

The Health System’s network of care in the region includes a behavioral health clinic in Plover.

## Structure and Leadership

**Chris Soska**  
*President*

**James Raczek, M.D.**  
*VP of Medical Affairs*

**Jo Ann Weinfurter, R.N.**  
*Chief Nursing Officer*

## Contact

4100 State Highway 66, Stevens Point, WI 54482

715-343-7700

[facebook.com/MCHSSP](https://facebook.com/MCHSSP)

[marshfieldclinic.org/regional/stevenspoint](https://marshfieldclinic.org/regional/stevenspoint)

## Facts and Figures\*

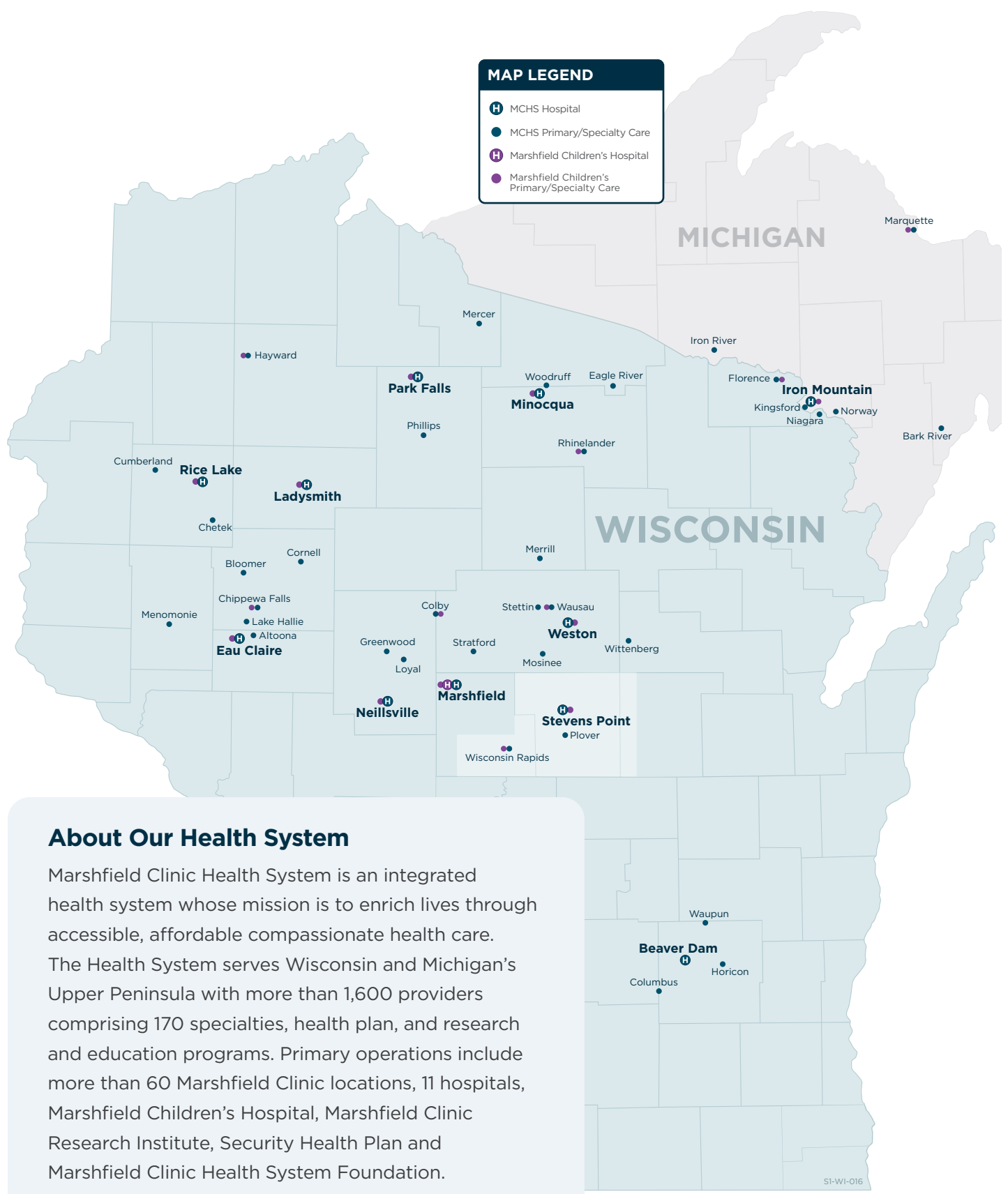
- Access to over 25 specialties
- Cared for more than 2,300 patients in the emergency department
- Performed nearly 400 surgeries
- Partnership with the University of Wisconsin–Stevens Point providing care to 500+ student-athletes and 20 sports teams.

\*Data from May–December 2022



**MAP LEGEND**

- MCHS Hospital
- MCHS Primary/Specialty Care
- Marshfield Children's Hospital
- Marshfield Children's Primary/Specialty Care



### About Our Health System

Marshfield Clinic Health System is an integrated health system whose mission is to enrich lives through accessible, affordable compassionate health care. The Health System serves Wisconsin and Michigan's Upper Peninsula with more than 1,600 providers comprising 170 specialties, health plan, and research and education programs. Primary operations include more than 60 Marshfield Clinic locations, 11 hospitals, Marshfield Children's Hospital, Marshfield Clinic Research Institute, Security Health Plan and Marshfield Clinic Health System Foundation.



**Marshfield Clinic Health System**



**marshfield children's**