



| Marshfield Medical Center–Minocqua

Marshfield Clinic Health System serves the Minocqua area through a medical center and four primary and specialty care locations. Marshfield Medical Center-Minocqua includes a 31-bed hospital located in northern Wisconsin. The medical center provides 24/7 emergency department coverage along with adult and pediatric primary care, birth center, critical care transport, imaging and lab services, pharmacy, physical therapy, sleep medicine, cardiology, cardiac and pulmonary rehab and surgical services.

The Health System's network of care in the region includes clinic locations in Eagle River, Rhinelander and Woodruff.

Structure and Leadership

Marshfield Medical Center-Minocqua is overseen by a 10-person Community Advisory Board.

Ty Erickson

President

Tony Blair, M.D.

VP of Medical Affairs

Patti Kerkorian, R.N.

Chief Nursing Officer

Facts and Figures*

- Employs nearly 500 people
- Access to over 25 specialties
- Performs over 5,000 surgeries each year
- Dedicated critical-care transport service
- Level IV Trauma Center

*Data from 2023

Contact

9576 Highway 70, Minocqua, WI, 54548

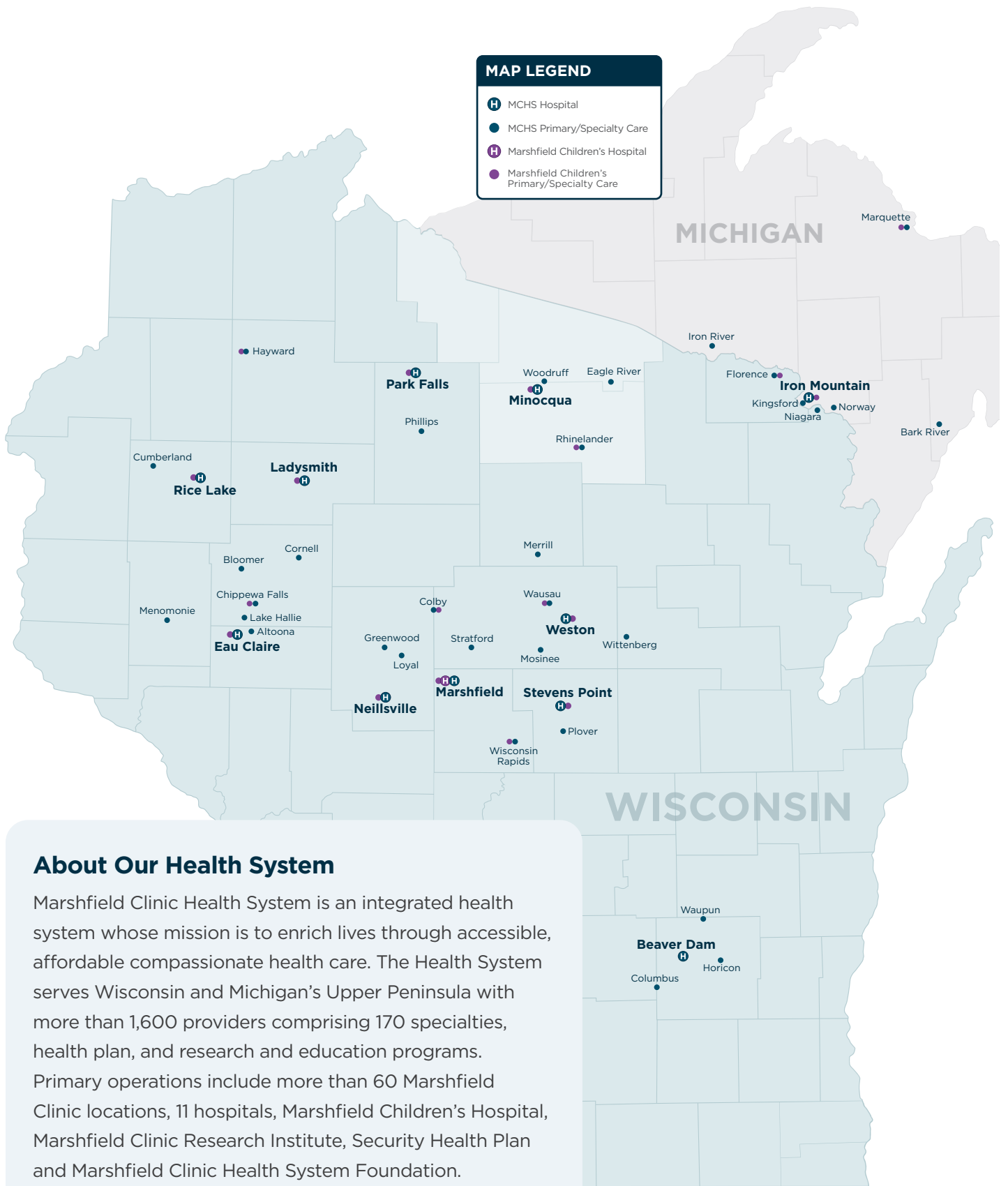
800-331-3734 or 715-358-1710

facebook.com/MCHSMQA

marshfieldclinic.org/regional/minocqua



Marshfield Medical Center–Minocqua



About Our Health System

Marshfield Clinic Health System is an integrated health system whose mission is to enrich lives through accessible, affordable compassionate health care. The Health System serves Wisconsin and Michigan's Upper Peninsula with more than 1,600 providers comprising 170 specialties, health plan, and research and education programs. Primary operations include more than 60 Marshfield Clinic locations, 11 hospitals, Marshfield Children's Hospital, Marshfield Clinic Research Institute, Security Health Plan and Marshfield Clinic Health System Foundation.



**Marshfield Clinic
Health System**



**marshfield
children's®**