



# Marshfield Medical Center–Ladysmith

Marshfield Clinic Health System serves Ladysmith and the surrounding communities with a medical campus offering hospital, primary and specialty care services. Marshfield Medical Center–Ladysmith includes an 11-bed hospital located in northern Wisconsin. The medical center provides 24/7 emergency department coverage along with adult and pediatric primary care, imaging and lab services, pharmacy, physical and occupational therapy and surgical services.

The Health System’s network of care in the region includes an additional primary care location in Cornell.

## Structure and Leadership

**Brad Groseth, M.H.A., FACHE**  
*President*

**Brandon Parkhurst, M.D.**  
*VP of Medical Affairs*

**Michele Seator, M.S.N.**  
*VP of Operations and Patient Care*

## Facts and Figures\*

- Employs nearly 180 people, and is the largest employer in Rusk County
- Access to over 20 specialties
- Cared for over 6,700 patients in the emergency department in the past year
- Performs over 55 surgeries each month
- Level IV Trauma Center

\*Data from 2022

## Contact

1200 Port Arthur Road, Ladysmith WI 54848

715-532-5561

[facebook.com/MCHSLDY](https://facebook.com/MCHSLDY)

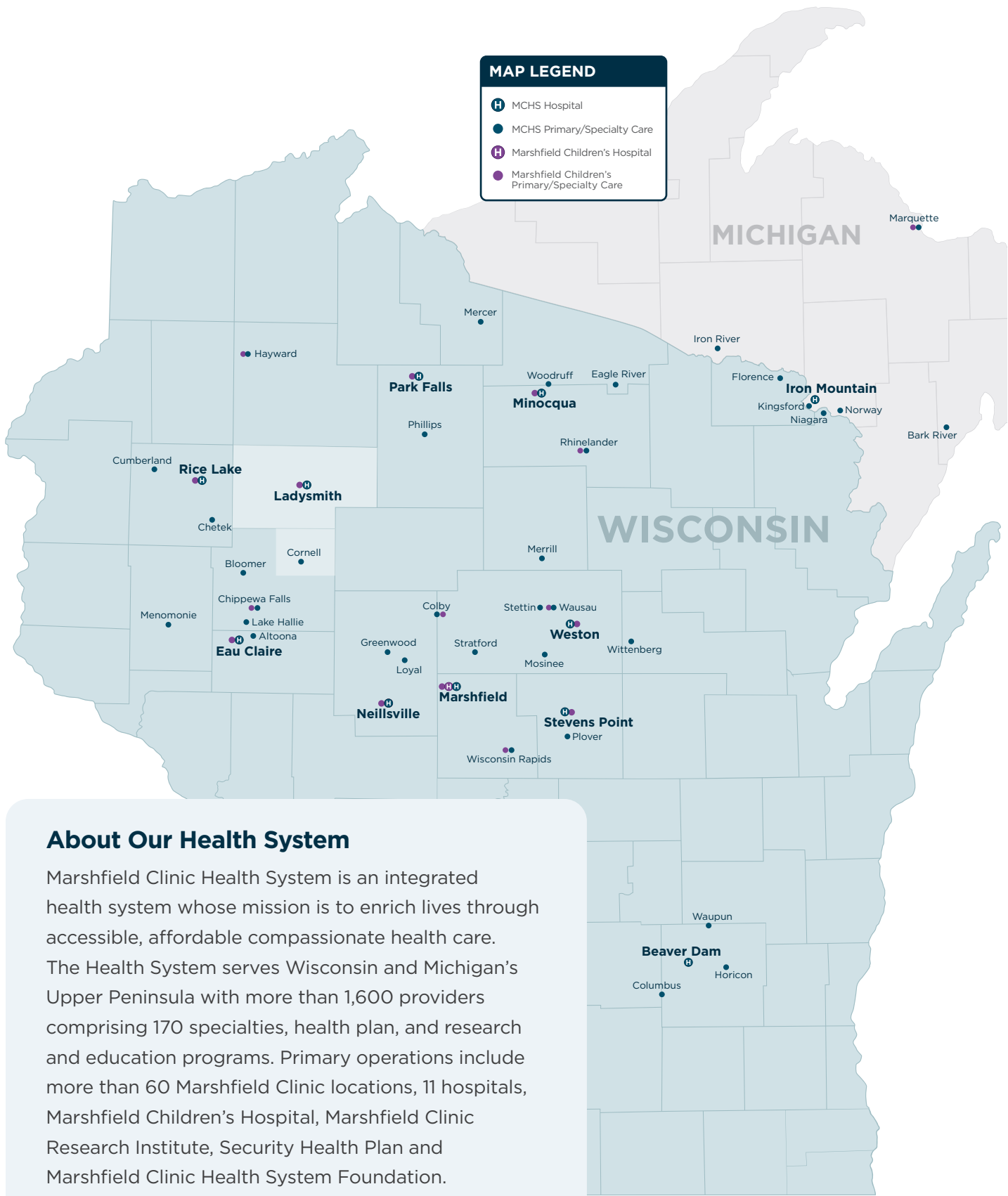
[marshfieldclinic.org/regional/ladysmith](https://marshfieldclinic.org/regional/ladysmith)



Marshfield Medical Center–Ladysmith

**MAP LEGEND**

-  MCHS Hospital
-  MCHS Primary/Specialty Care
-  Marshfield Children's Hospital
-  Marshfield Children's Primary/Specialty Care



**About Our Health System**

Marshfield Clinic Health System is an integrated health system whose mission is to enrich lives through accessible, affordable compassionate health care. The Health System serves Wisconsin and Michigan's Upper Peninsula with more than 1,600 providers comprising 170 specialties, health plan, and research and education programs. Primary operations include more than 60 Marshfield Clinic locations, 11 hospitals, Marshfield Children's Hospital, Marshfield Clinic Research Institute, Security Health Plan and Marshfield Clinic Health System Foundation.



**Marshfield Clinic Health System**



**marshfield children's®**