



| Marshfield Medical Center–Rice Lake

Marshfield Clinic Health System serves Rice Lake area communities with a medical center offering hospital, primary and specialty care services. Marshfield Medical Center–Rice Lake includes a 40-bed hospital. The medical center provides 24/7 emergency department coverage along with adult and pediatric primary care, critical care transport, imaging and lab services, pharmacy, physical and occupational therapy, sleep medicine and surgical services.

The Health System’s network of care in the region includes clinic locations in Cumberland and Hayward, hospice and behavioral health centers in Rice Lake.

Structure and Leadership

Marshfield Medical Center–Rice Lake has a local Community Advisory Board.

Brad Groseth, M.H.A., FACHE
President

Brandon Parkhurst, M.D.
VP of Medical Affairs

Barb Agen, R.N.
VP of Operations and Patient Care

Gina Leath, R.N.
Chief Nursing Officer

Facts and Figures*

- Employs nearly 600 people
- Access to over 30 specialties
- Cared for over 13,300 patients in the emergency department
- Performed over 3,100 surgeries
- Level IV Trauma Center

*Data from 2023

Contact

1700 West Stout Street, Rice Lake, WI 54868

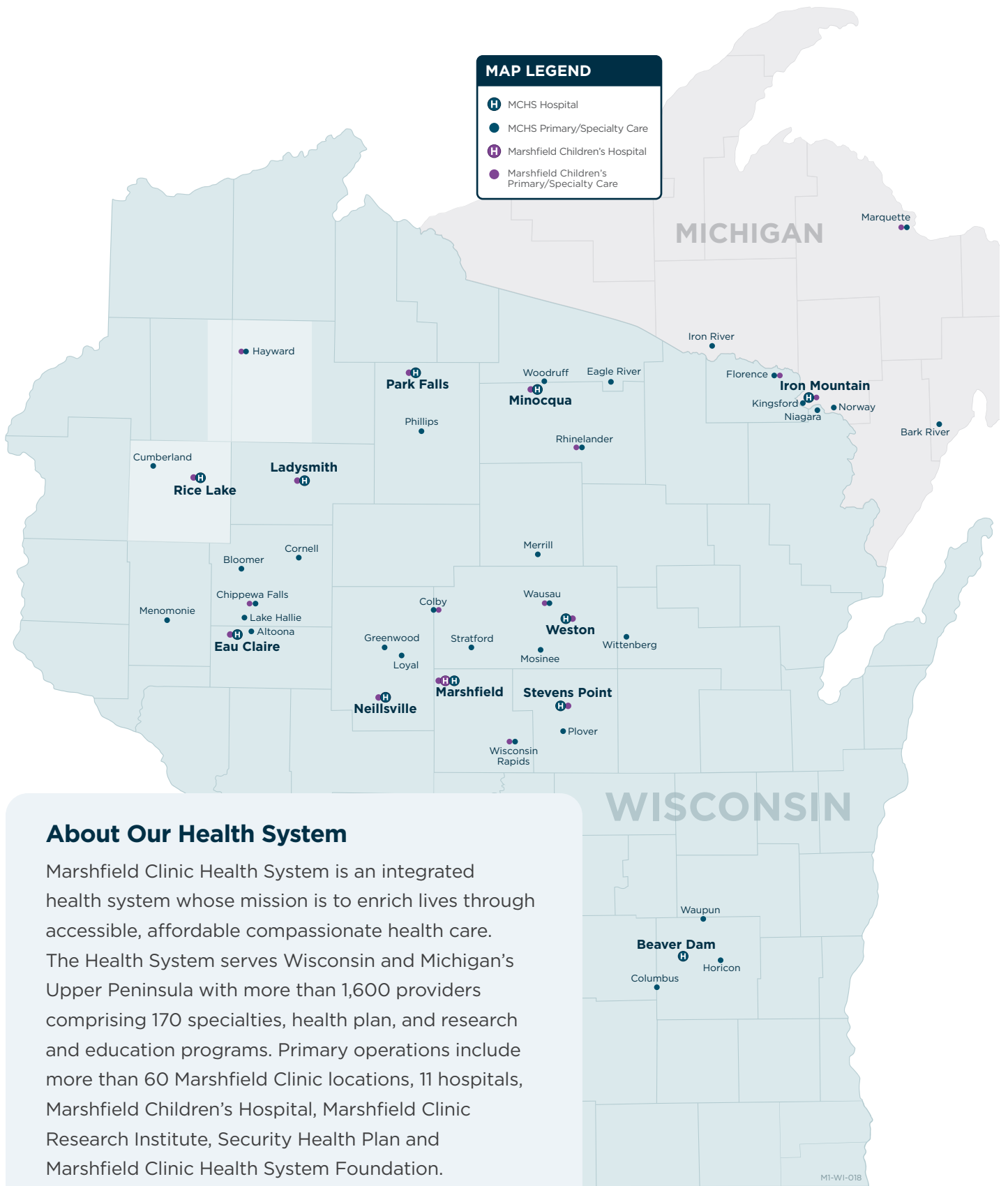
715-236-8100

facebook.com/MCHSRL

marshfieldclinic.org/regional/ricelake



Marshfield Medical Center–Rice Lake



About Our Health System

Marshfield Clinic Health System is an integrated health system whose mission is to enrich lives through accessible, affordable compassionate health care. The Health System serves Wisconsin and Michigan's Upper Peninsula with more than 1,600 providers comprising 170 specialties, health plan, and research and education programs. Primary operations include more than 60 Marshfield Clinic locations, 11 hospitals, Marshfield Children's Hospital, Marshfield Clinic Research Institute, Security Health Plan and Marshfield Clinic Health System Foundation.



**Marshfield Clinic
Health System**



**marshfield
children's®**