



Marshfield Medical Center–Eau Claire

Marshfield Clinic Health System has served the Chippewa Valley for over 30 years. The region offers 197 primary and specialty care providers, with more than 1,300 staff in the region. Marshfield Medical Center-Eau Claire has a 56-bed hospital with advanced care capabilities including cardiovascular services, advanced spine and orthopedic surgery, interventional radiology, 24/7 emergency department, a Level III trauma center, intensive care, inpatient/outpatient oncology care and more.

The Health System's network of care in the region includes clinic locations in Altoona, Bloomer, Chippewa Falls, Eau Claire (Eau Claire, Oakwood and Riverview Centers), Lake Hallie and Menomonie.

Structure and Leadership

Marshfield Medical Center–Eau Claire is overseen by a Community Advisory Board.

Brad Groseth, M.H.A., FACHE

President

Brandon Parkhurst, M.D.

VP of Medical Affairs

Gina Leath, R.N.

Chief Nursing Officer

Facts and Figures*

- Over 96,000 outpatient patient visits
- Access to over 115 specialties
- Nearly 9,000 surgeries and special procedures
- More than 10,000 total emergency department visits
- Certified Level III Trauma Center

*Data from 2022

Contact

2310 Craig Rd, Eau Claire, WI 54701





715-858-8100

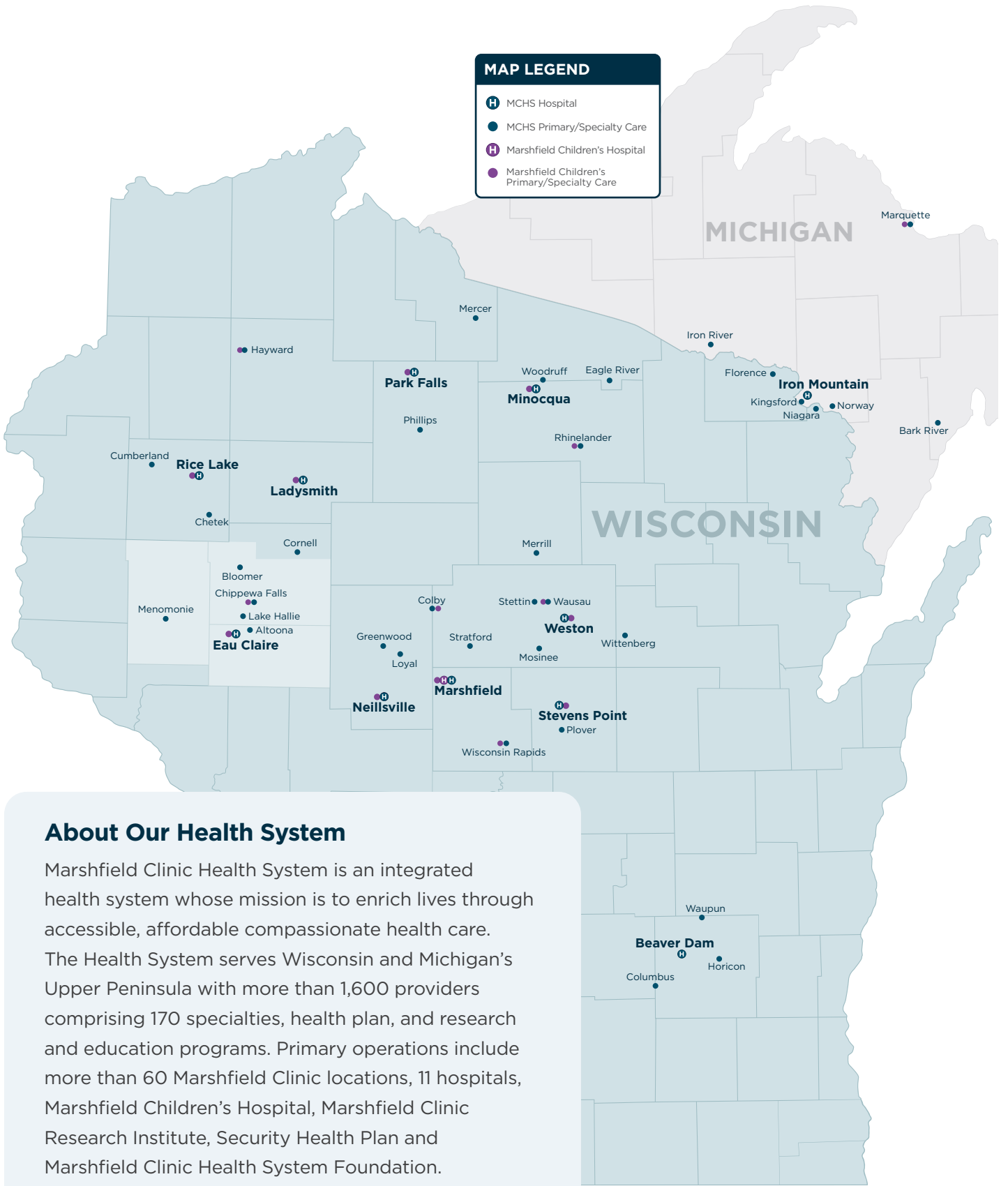
facebook.com/MCHSCV

marshfieldclinic.org/regional/eauc Claire



MAP LEGEND

-  MCHS Hospital
-  MCHS Primary/Specialty Care
-  Marshfield Children's Hospital
-  Marshfield Children's Primary/Specialty Care



About Our Health System

Marshfield Clinic Health System is an integrated health system whose mission is to enrich lives through accessible, affordable compassionate health care. The Health System serves Wisconsin and Michigan's Upper Peninsula with more than 1,600 providers comprising 170 specialties, health plan, and research and education programs. Primary operations include more than 60 Marshfield Clinic locations, 11 hospitals, Marshfield Children's Hospital, Marshfield Clinic Research Institute, Security Health Plan and Marshfield Clinic Health System Foundation.



Marshfield Clinic Health System



marshfield children's